

Dinuba Senior Citizen's Center



437 N. Eaton Ave, Dinuba 591-2450



Newsletter - January 2025

Hello January,

Happy New Years! In the month of December the center wrapped up the year with our Annual Christmas Party and Quilt Raffle. We also hosted Manicure Mondays, Paint Party, and had catering and potluck style lunches. A special thank you to Dave Fry from You-Be's U-Bake-Pizza, for coming out and catering delicious pizzas for our center. Also thank you Vineyards at Fowler for your continues support in sponsoring our birthday club and provided cake and raffle prizes.

Our Christmas Party was a huge success! We had fun interactive games, raffles, and food. The Dinuba Senior Center Inc., also announced the winner of the Annual Quilt Raffle; 1st prize quilt winner was Mary Perez, 2nd prize \$100 winner was Josefina Medina, and 3rd prize \$75 winner was Linette Terry. A HUGE thank you to the Dinuba Senior Center Inc. for your contributions and everyone who was able to make this event much more memorable!

Lets get that New Year luck started, We're going to the Casino! The Center is now taking sign ups for our Chicken Ranch Casino Trip on February 5th, 2025. \$30 per person and receive \$20 in slot play. **Space is limited, reserve your seat today!**

Important, we are CLOSED! The Center will be CLOSED on **January 20,2025.**

There is lots to look forward to in January, come by the center and check out the activity calendar.

Inside This Issue:

Center Activity	Pg. 1-9
Senior of the Month	Pg. 10
Lunch Calendar	Pg. 11
Activity Calendar	Pg. 12
Fun Facts & Funnies	Pg. 13
Puzzle Page	Pg. 14
News & Announcements	Pg. 15-19

Contact Info.
(559) 591-2450

Maricela Montoya

MMontoya@dinuba.ca.gov

Christmas Party



Christmas Party



Christmas Party



Christmas Party



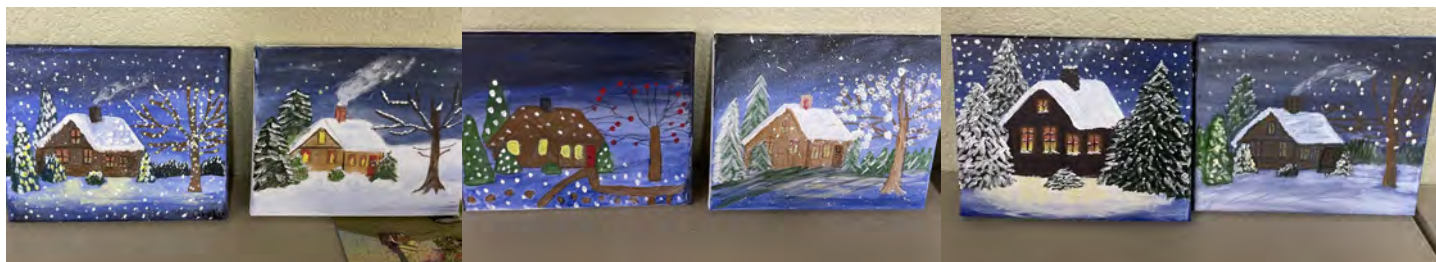
Birthday Club

Sponsored by Vineyards at Fowler



Senior Paint Party

Sponsored by Dinuba Senior Citizens Inc.



Manicure Monday



All you
NEED
ARE
Nails!



New Year's Eve Potlucks



SENIOR OF THE MONTH



Susan Abair

Susan is January Senior of the Month. Susan is such a delight to have at the Senior Center. You will always find Susan utilizing her creative skills quilting gorgeous quilts! Seniors describe Susan as caring, loving, and crafty. Thank you Susan for being a big part of the Senior Center.

January

Dimuba Senior Center

Lunch Menu

591-2450

MENU IS SUBJECT TO CHANGE DUE TO MANUFACTURER SHORTAGES

MONDAY CDBG GRANT IN HALL DINING	TUESDAY	WEDNESDAY CDBG GRANT IN HALL DINING	THURSDAY	FRIDAY CDBG GRANT IN HALL DINING
<p>1</p> <p>FEBRUARY PRE-PAID LUNCHES \$16.00</p>	<p>2</p> <p>Happy New Year!</p>	<p>3</p> <p>SORRY WE'RE CLOSED</p>	<p>4</p> <p>NO LUNCH</p>	<p>5</p> <p>CHINESE FOOD</p>
<p>6</p> <p>CHILE VERDE, RICE, AND BEANS</p>	<p>7</p> <p>NO LUNCH</p>	<p>8</p> <p>ENCHILADAS, RICE, AND BEANS</p>	<p>9</p> <p>NO LUNCH</p>	<p>10</p> <p>CHICKEN FAJITAS, RICE, AND BEANS</p>
<p>13</p> <p>Orange Chicken Bowl Broccoli and Rice, Fresh Fruit, Milk & Juice</p>	<p>14</p> <p>Chicken Pot Pie Chef Salad, Cookie, Fresh Fruit, Milk & Juice</p>	<p>15</p> <p>Salsbury Steak Mashed Potatoes, Green Beans, Dinner roll, Fresh Fruit, Milk & Juice</p>	<p>16</p> <p>Beef & Barley Soup Hot Sliced Roast Beef Sandwich, Fresh Fruit, Milk & Juice</p>	<p>17</p> <p>Lasagna Garlic Bread, Roasted Zucchini, Fresh Fruit, Milk & Juice</p>
<p>20</p> <p>SORRY WE'RE CLOSED</p>	<p>21</p> <p>Meatloaf Mashed Potatoes, Green beans, Dinner roll, Fresh Fruit, Milk & Juice</p>	<p>22</p> <p>Chicken Alfredo Garlic bread, Garden Salad, Fresh Fruit, Milk & Juice</p>	<p>23</p> <p>Soft Tacos Rice & Beans, Chips & Salsa, Fresh Fruit, Milk & Juice</p>	<p>24</p> <p>Chicken Posole Shredded Cabbage, Onion, Cilantro, Tortillas, Fresh Fruit, Milk & Juice</p>
<p>27</p> <p>Breaded Fish Rice Pilaf, Mixed Vegetables, Tarter Sauce, Fresh Fruit, Milk & Juice</p>	<p>28</p> <p>Baked Chicken Macaroni Salad, Corn Bread Muffin, Fresh Green Beans, Fresh Fruit, Milk & Juice</p>	<p>29</p> <p>Beef Stroganoff Steamed Broccoli, Dinner Roll, Fresh Fruit, Milk & Juice</p>	<p>30</p> <p>Sliced Ham Mashed Potatoes, Green Beans, Dinner Roll, Slice of Pie, Fresh Fruit, Milk & Juice</p>	<p>31</p> <p>Deli Sandwich Macaroni Salad, Chips, Fresh Fruit, Milk & Juice</p>

January

Dinuba Senior Center

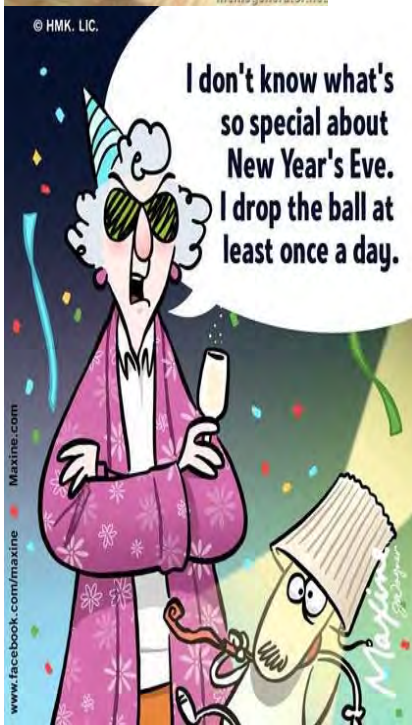
ACTIVITY CALENDAR
591-2450

MONDAY	TUESDAY	WEDNESDAY	THURSDAY	FRIDAY
 <p>6 BINGO 9A-1030A LUNCH *DINE IN ONLY* 1130A-1230P MONDAY MANICURE 130P-230P</p>	 <p>7 CERAMICS 8A-3P BINGO 830A-1030A NO LUNCH LOTERIA 130P-230P</p>	<p>1 SORRY WE'RE CLOSED</p>	<p>2 CERAMICS 8A-3P BINGO 830A-1030A NO LUNCH</p>	<p>3 LOTERIA 9A-1030A LUNCH *DINE IN ONLY* 1130A-1230P</p>
<p>13 BINGO 9A-1030A LUNCH *DINE IN ONLY* 11A-12P CRAFT, COFFEE, & CONVERSATION 130P-330P</p>	<p>14 CERAMICS 8A-3P BINGO 830A-1030A <u>BLOOD PRESSURE</u> W/AURORA 10A-1130A LUNCH 11A-1230P LOTERIA 130P-230P</p>	<p>8 BINGO 9A-1030A TOPS 930A-1130A LUNCH *DINE IN ONLY* 1130A-1230P</p>	<p>9 CERAMICS 8A-3P BINGO 830A-1030A NO LUNCH <u>VINEYARDS AT FOWLER</u> <u>SPONSORED BIRTHDAY CLUB</u> & LOTERIA 1P-230P</p>	<p>10 LOTERIA 9A-1030A LUNCH *DINE IN ONLY* 1130A-1230P</p>
<p>20 SORRY WE'RE CLOSED</p>	<p>21 CERAMICS 8A-3P BINGO 830A-1030A LUNCH 11A-1230P LOTERIA 130P-230P</p>	<p>15 BINGO 9A-1030A TOPS 930A-1130A LUNCH *DINE IN ONLY* 11A-12P</p>	<p>16 CERAMICS 8A-3P BINGO 830A-1030A LUNCH 11A-1230P <u>DSC INC PAINT PARTY</u> 130P-330P <small>*SIGN UP NEEDED*</small></p>	<p>17 LOTERIA 9A-1030A LUNCH *DINE IN ONLY* 11A-12P</p>
<p>27 BINGO 9A-1030A LUNCH *DINE IN ONLY* 11A-12P MONDAY MANICURE 130P-230P</p>	<p>28 CERAMICS 8A-3P BINGO 830A-1030A <u>HEALTH SCREENINGS</u> <u>W/JOAQUIN 1030A-1130A</u> LUNCH 11A-1230P LOTERIA 130P-230P</p>	<p>22 BINGO 9A-1030A TOPS 930A-1130A LUNCH *DINE IN ONLY* 11A-12P</p>	<p>23 CERAMICS 8A-3P BINGO 830A-1030A LUNCH 11A-1230P</p>	<p>24 LOTERIA 9A-1030A LUNCH *DINE IN ONLY* 11A-12P</p>
<p>20 SORRY WE'RE CLOSED</p>	<p>21 CERAMICS 8A-3P BINGO 830A-1030A LUNCH 11A-1230P LOTERIA 130P-230P</p>	<p>29 BINGO 9A-1030A TOPS 930A-1130A LUNCH *DINE IN ONLY* 11A-12P</p>	<p>30 CERAMICS 8A-3P BINGO 830A-1030A LUNCH 11A-1230P</p>	<p>31 LOTERIA 9A-1030A LUNCH *DINE IN ONLY* 11A-12P</p>

FUN FACTS & FUNNIES



Why should you stand on one leg on New Year's Eve? To start the new year on the right foot.



31 DAYS IN THE MONTH

National Puzzle Day | **Elvis Presley's Birthday** | **Carnations January Flowers**

JANUARY FUN FACTS

The Coldest Month of The Year | **National Popcorn Day** | **National Penguin Day**

Eating Black Eyed Peas on New Years Day is Good Luck | **Garnet Birthstone** | **National Rubber Duck Day**

Martin Luther King Jr. Day | **National Book Month** | **National Hot Chocolate Day** | **National Spaghetti Day**

1st Month of The Year | **The Tournament of Roses Parade has run since 1890.** | **Astrology Signs: Capricorn, Aquarius**

MADEWITHHAPPY.COM



Americans drink 360 million glasses of champagne on NYE

December 31 | **January 1**

New Years Eve is December 31 | **New Years Day is January 1**

Eating Black Eyed Peas on New Years Day is Good Luck

Lobster & Chicken are considered Bad Luck to be eaten on New Years

NEW YEARS FUN FACTS

In Mt. Olive, North Carolina they watch a 3-foot pickle drop

Open Windows & Doors to let out the old

Throwing a bucket of water out the window will drive away evil spirits

Over 1 Million People are at the ball drop in Time Square

The color of your undies could bring you good things that next year

Eat 12 Grapes at Midnight for Good Luck

The Tournament of Roses Parade has run since 1890.

MADEWITHHAPPY.COM

JANUARY

WORD SEARCH

I E R P H W N I P P H I B E R N A T E W Z W
 J P J Z F J T S Q D Q O I G U U U I J U W D
 F F Q G H K Z D W J C T T M V O J K H V G H
 S N A B G A B S O H G B S C A R F D S E K S
 T E Y Z U P T U O O U Y G K O X B Z J P V N
 E W C P Z H I G O P C A Q T R C D Q A Q J V
 P Y H M S Y G N R F D M D J F A O B N R N X
 Q E I G D T R Q N A D R N X A L H A U E C U
 G A N R E D F D O Y S W E A T E R B A S H B
 F R E G T L R A I N G X Z W I N T E R O D H
 W A S X U M I X S F Y R V P A D F U Y L F O
 V J E J C I E N X M L K J R D A Y A J U T L
 C I N B M Q N L F F I R E W O R K S M T U I
 O X E T N U D D R H R F H J C Z Z G I I F D
 L T W I B N S N O W V O C O L D J O D O L A
 K C Y D K C U D Z Y P L S N O W M A N N L Y
 C T E E G L O V E S C X V T C N Z L I C O E
 B T A O X E I S N O W F L A K E I S G Z Z Y
 U C R J M T J K Z A I Q W Y W F A I H V N O
 N T V F A K V E P V P C E L E B R A T I O N

CALENDAR
 CELEBRATION
 CHINESE NEW YEAR
 CLOCK
 COLD
 FAMILY

FIREWORKS
 FRIENDS
 FROST
 FROZEN
 GLOVES

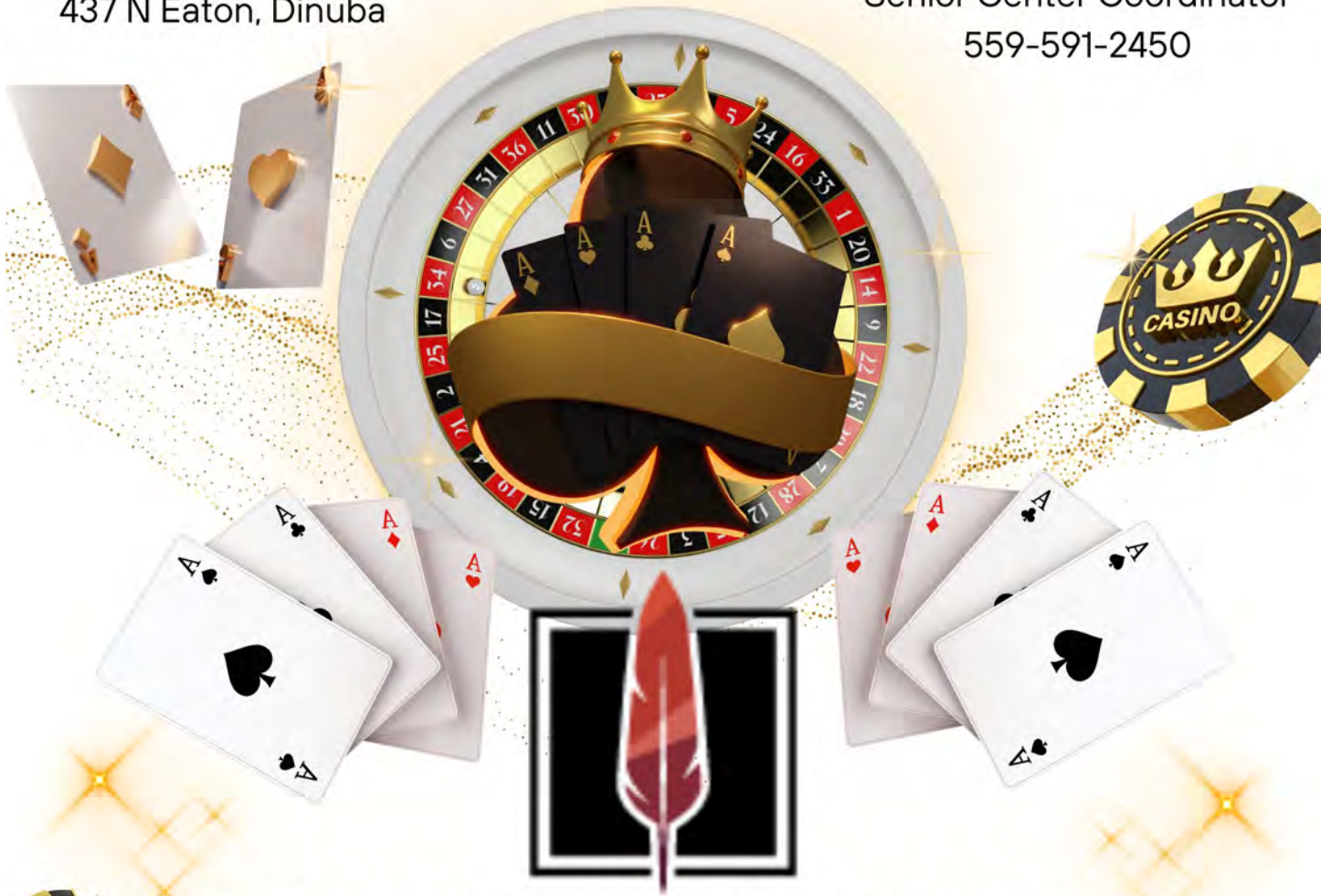
GOALS
 HIBERNATE
 HOLIDAY
 HOT COCOA
 JANUARY
 MIDNIGHT

MLK JR DAY
 NEW YEAR
 PENGUIN
 RAIN
 RESOLUTION

SCARF
 SNOW
 SNOWFLAKE
 SNOWMAN
 SWEATER
 WINTER

Dinuba Senior Center
437 N Eaton, Dinuba

Maricela Montoya
Senior Center Coordinator
559-591-2450



CHICKEN RANCH CASINO

WEDNESDAY, FEBRUARY 5TH 2025

\$30 PER PERSON

NEW MEMBERS RECEIVE \$20 IN SLOT PLAY

NO REFUNDS

Leaving: 8:00am

Returning: 4:00pm

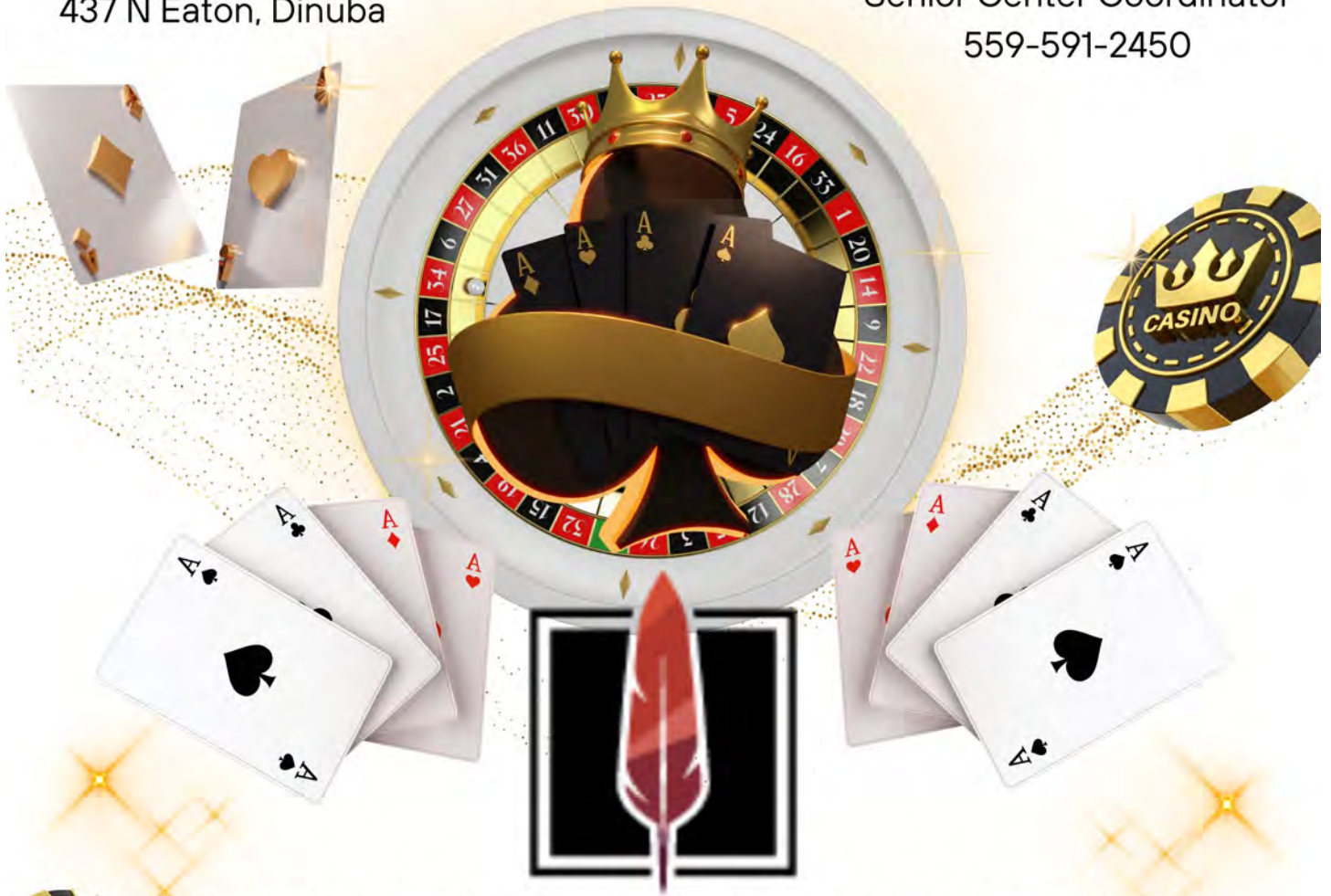
OPEN TO ANYONE 21 YEARS+ ID REQUIRED

RESERVE YOUR SEATS TODAY! SPACE IS LIMITED!

CHECKS MADE PAYABLE TO: ELITE CHARTER

Dinuba Senior Center
437 N Eaton, Dinuba

Maricela Montoya
Senior Center Coordinator
559-591-2450



CHICKEN RANCH CASINO

MIÉRCOLES, 5 DE FEBRERO 2025

\$30 POR PERSONA

NUEVOS MIEMBROS RECIBEN \$20 EN SLOT PLAY

¡NO HAY REEMBOLSOS!

Salida: 8:00am

Regreso: 4:00pm

ABIERTO A CUALQUIER PERSONA DE 21 AÑOS+

¡RESERVA TUS ASIENTOS HOY! ¡EL ESPACIO ES LIMITADO!

CHEQUES: ELITE CHARTER



Dinuba Senior Center

Craft, Coffee, & Conversation

Come Join Us!
We will be making a DIY
Mini Valentines Wreath
Craft!

Monday, January 13 2025
1:30pm-3:30pm

Sign up and see you there!

Maricela Montoya
Senior Center Coordinator
559-591-2450

Paint Party

January 16th
1:30pm-3:30pm

*Sign up and See
you there!*

SPONSORED BY
DINUBA SENIOR CENTER INC.

January Birthday Club

IF YOU CELEBRATE A BIRTHDAY IN
THE MONTH OF JANUARY COME JOIN
US AS WE CELEBRATE YOU!

January 9th, 2024
1:00pm-2:30pm

FOLLOWED BY LOTERIA
SPONSORED BY VINEYARDS AT FOWLER

Manicure Monday

1/6/25

1:00pm- 3:30pm
Sign up Needed

1/27/25

1:00pm- 3:30pm
Sign up Needed

Give your Nails a fresh new coat!

We will be using Gel Nail Polish
and Curing with a UV heat lamp

Maricela Montoya
Senior Center Coordinator
559-591-2450

Announcements



January

Sandra Tait	1/4
Lorraine Celaya	1/9
Carol Hirahara	1/18
Petra Gonzales	1/18
Rosario Rojas	1/24
Andrew Moreno	1/25
Glenn Surabian	1/27
Sylvia Duarte	1/31
Virginia Rodriguez	1/31

Puzzle Solution JANUARY WORD SEARCH



THANK YOU

Donations:

Reedley SaveMart: Dessert Donation

DSC INC: Paint Party

Vineyards at Fowler: Birthday Club Sponsor

VOLUNTEERS:

MaryEllen Woodcock, Frank Navarro, Dora Reyes, Pete Yrigollen, Carol Hiraharra, Diana Lopez and Christine Soto.

REMINDER:

PAID LUNCH needs to be picked up by 1PM same day.

If you are unable to pick up please call and let us know 559-591-2450